

CENTREPORT COMMONS

SE corner of Centre Ave. and Portage Rd.
Portage, MI 49002



TREYSTAR™

Locate. Partner. Grow.

Retail / Office / Restaurant Opportunities

Project Information

CentrePort Commons is located at the SE corner of Centre Avenue and Portage Road in the fast growing SE Portage area. This eight-acre mixed-use project features retail, restaurant and office opportunities. This is a prime corner site located in the heart of the major expansion investments made by Stryker and Pfizer.

Current Availability

- Retail or office build-to-suite opportunities
- One acre to 1.4-acre site opportunities

Demographics

Traffic Count (ADT): 40,000

Centre Ave. (East/West): 20,000

Portage Rd. (North/South): 21,700

Average Household Income

1 Mile	3 Miles	5 Miles
\$75,000	\$67,000	\$72,500

Population

1 Mile	3 Miles	5 Miles
2,000	28,000	75,500

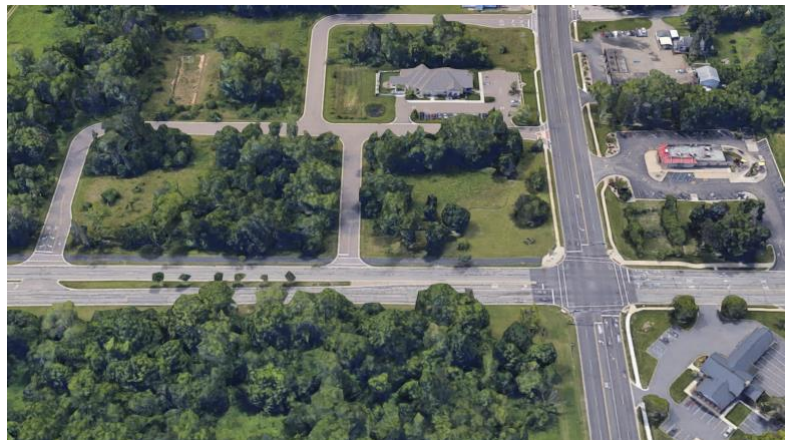
Contact Us To Learn More



Terry Patterson
(269) 329.1808
(269) 488.1715 Direct
tpatterson@treystar.com

161 E. Michigan Ave, Suite 400
Kalamazoo, Michigan 49007
treystar.com

Aerial of Current Development



Proposed New Development

