

# OFFICE FOR LEASE

229-259 E. Michigan Ave. | Suite 405 | Kalamazoo, MI 49007

## Property Details

Historic multi-client building offering flexible and innovative high-end suites consisting of 500 SF up to 8,000 SF.

The building features turn-of-the-century charm with exposed brick and natural wood, along with an abundance of natural light including a 4-story open atrium ideal for future networking events.

Suites comprise of different layouts ranging from hard offices to open concepts with vaulted ceilings as well as great views of downtown Kalamazoo.

## Amenities

- Dedicated parking
- Accessible on-site management
- Steps away from banking, restaurants, shopping, parks, and more
- Conveniently located in downtown Kalamazoo within the heart of the business and entertainment district

## Major Clients

- LKF Marketing
- Barbara Foley: Chapter 13 Trustee
- Clear Ridge Wealth Management, LLC
- Circa Design
- Kingscott
- TMP Architecture
- Steelhead Engineering/Seven Generations AE



TREYSTAR™  
Locate. Partner. Grow.

Fritz Brown  
Office Leasing  
269.217.5179 | fbrown@treystar.com

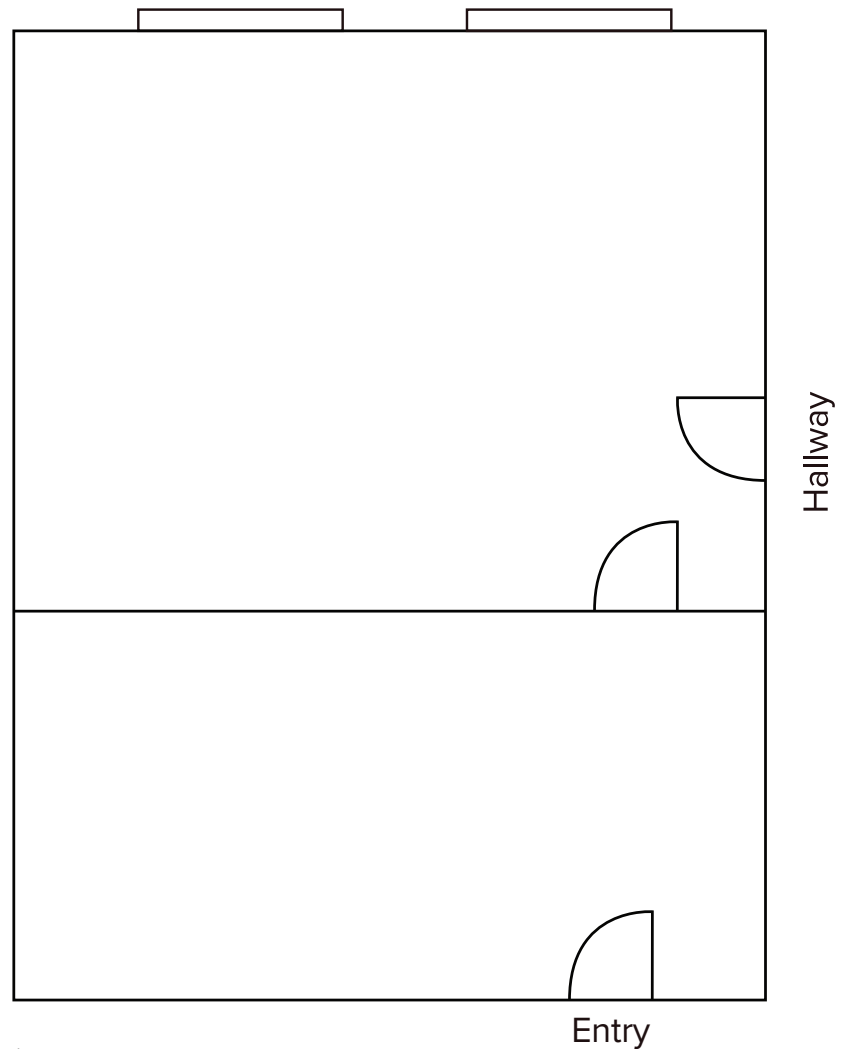


### Suite Description

- Located on the 4th floor; 500+ SF
- Move-in ready suite includes two private offices or an office and reception configuration
- Views of The Haymarket Plaza
- Great for start-up or downsizing businesses
- Client responsible for electricity



Haymarket Plaza



\*This drawing is not to scale